



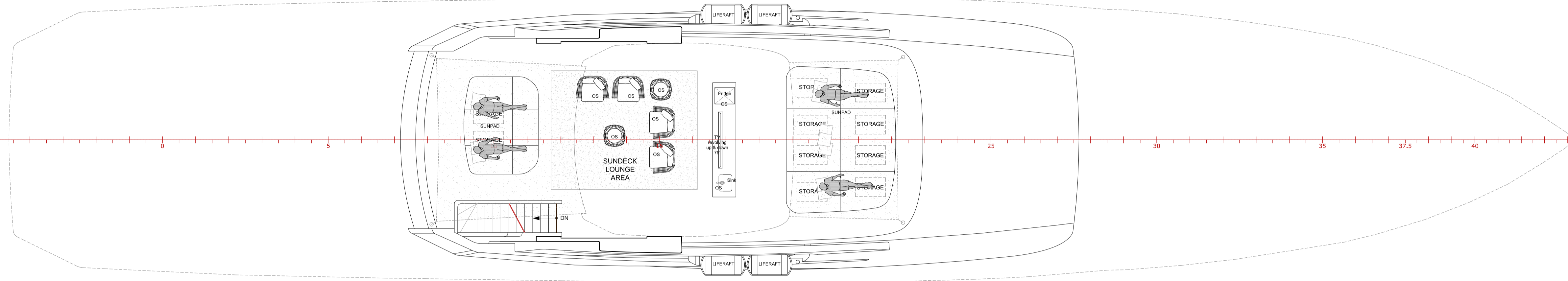
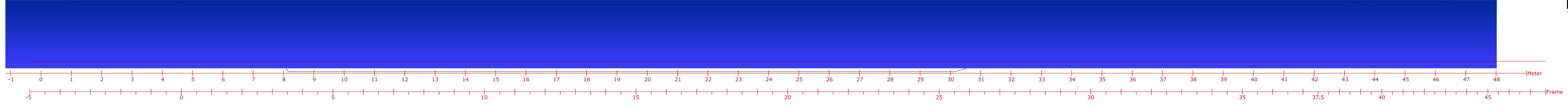
PROFILE STB

SD 9500 from BL

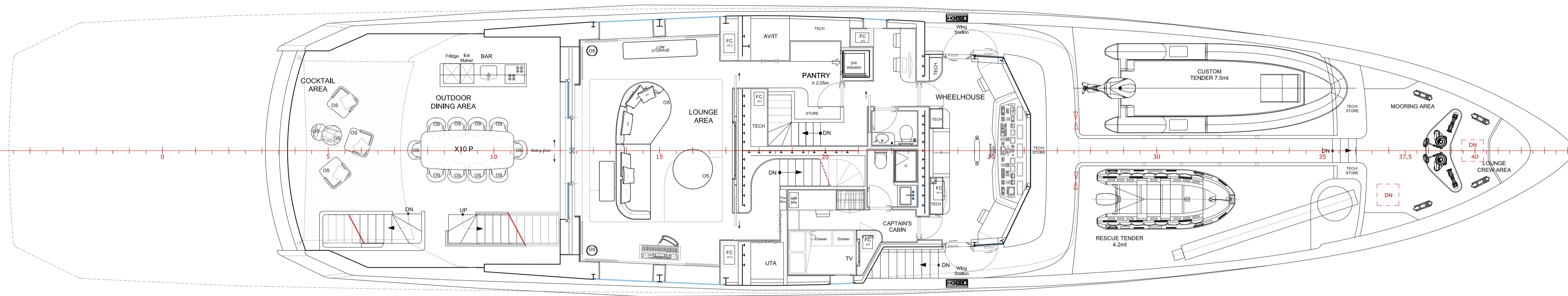
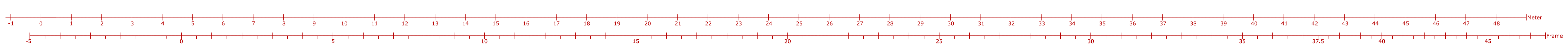
UD 6850 from BL

MD 4200 from BL

LD 1620 from BL

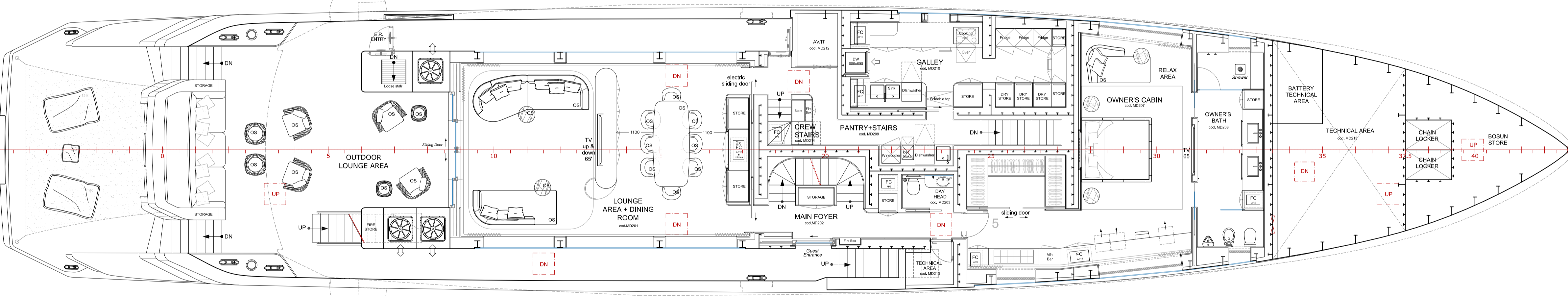
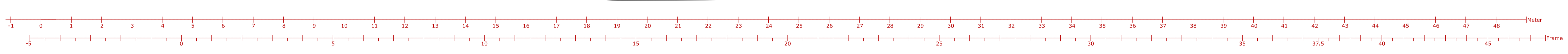


SUN DECK



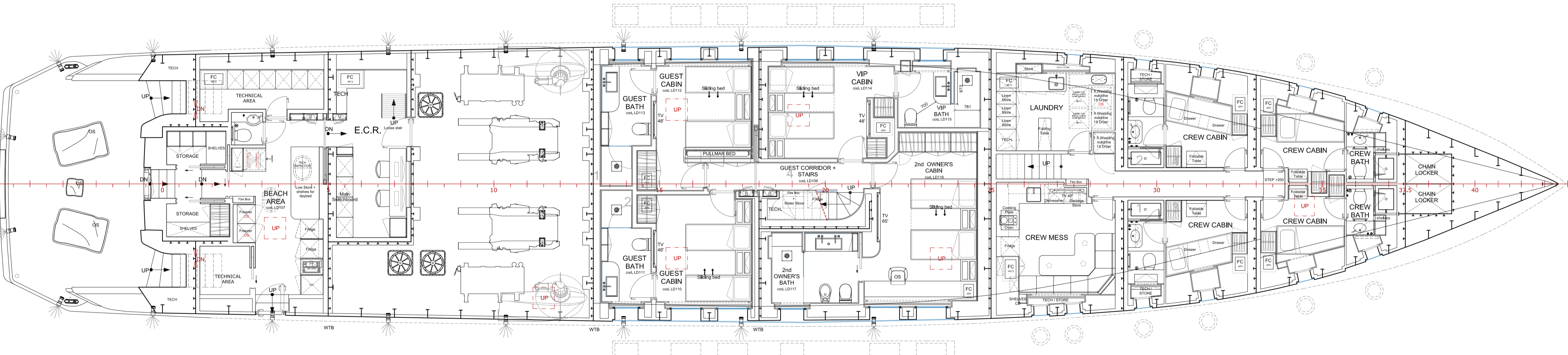
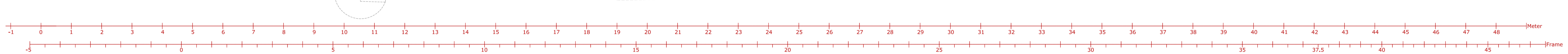
UPPER DECK

1 CAPTAIN'S CABIN



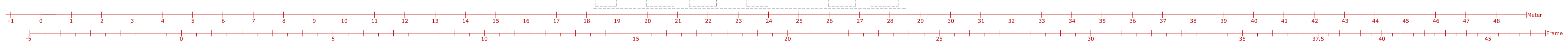
MAIN DECK

1 OWNER'S CABIN



LOWER DECK

3 GUEST CABIN
1 2nd OWNER'S CABIN
4 CREW CABIN



LENGHT OVER ALL (LOA):	47,5 m
BEAM OVER ALL (BOA):	8,80 m
GROSS TONNAGE (GT):	485GRT
CLASSIFICATION:	RINA CHARTER COMPLIANCE
CONSTRUCTION MATERIAL:	AL ALLOY
GUEST ACCOMMODATION:	10+1
CREW ACCOMMODATION:	9+1

THE ITALIAN SEA GROUP



R&D DEPARTMENT	ADMIRAL	Sheet N°	1	Of	1	Drawn by	LM	Date	23/07/18	Checked by	MR	Date	23/07/18
	ATOS 47	Project description	A0	Scale	1:75	Worked by	MP	Date	23/07/18	Released by	PP	Date	23/07/18

GENERAL ARRANGEMENT
PIANO GENERALE

THIS DRAWING HAS BEEN PRODUCED BY NCA S.P.A. IN THE EXCLUSIVE PROPERTY OF NCA S.P.A. NO USE, REPRODUCTION, REPRODUCTION, ADAPTATION OR ALTERATION OF THIS DRAWING OR ANY PART OF IT IS PERMITTED WITHOUT THE WRITTEN AUTHORIZATION BY NCA S.P.A.

NOTE : The present General Arrangement shows some option items. The relevant cost are subject to agreement between Shipyard and Owner before to be considered included in the scope of supply.