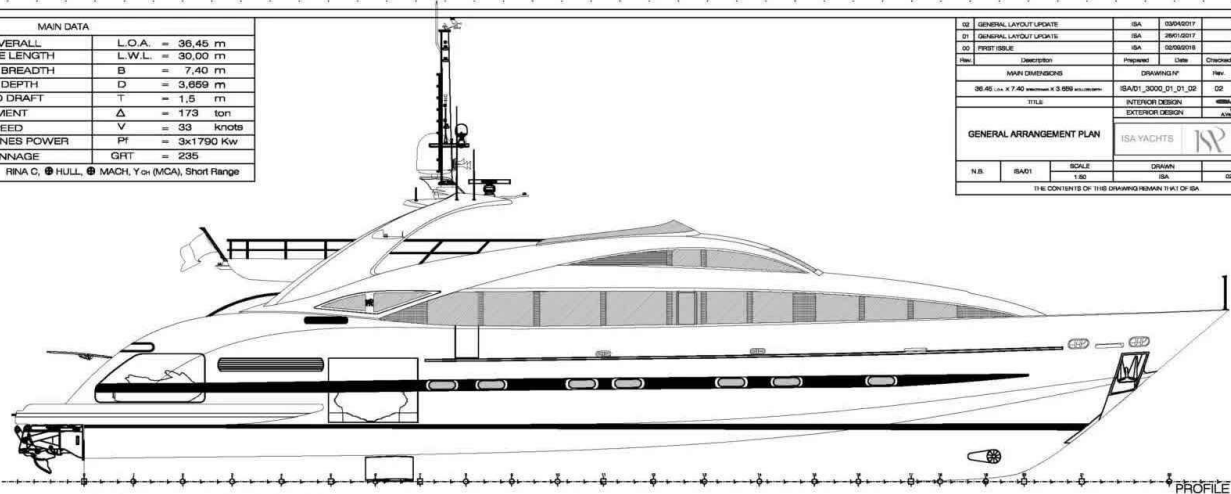


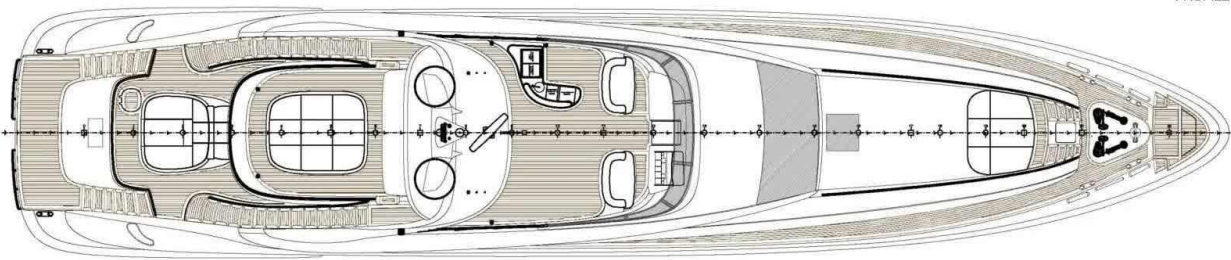
MAIN DATA	
LENGTH OVERALL	L.O.A. = 36,45 m
WATERLINE LENGTH	L.W.L. = 30,00 m
MOULDED BREADTH	B = 7,40 m
MOULDED DEPTH	D = 3,669 m
FULL LOAD DRAFT	T = 1,5 m
DISPLACEMENT	Δ = 173 ton
DESIGN SPEED	V = 33 knots
MAIN ENGINES POWER	PE = 3x1790 Kw
GROSS TONNAGE	GRT = 295
CLASS	RINA C, ● HULL, ● MACH, Ych (MCA), Short Range

02	GENERAL LAYOUT UPDATE	ISA	03/04/2017			
01	GENERAL LAYOUT UPDATE	ISA	28/01/2017			
02	FRONT SCALE	ISA	03/03/2016			
Rev	Description	Prepared	Date	Checked	Approved	
MAIN DIMENSIONS		DRAWING IN		Rev.	Scale	of
36,45 (L.O.A.) x 7,40 (M.B.) x 3,669 (M.D.)		ISA01_3000_01_01_DE		02	-	01/01
TITLE		INTERIOR DESIGN		N/A		
		EXTERIOR DESIGN		N/A		
GENERAL ARRANGEMENT PLAN		ISA YACHTS				
N.B.	ISA01	SCALE	1:50	DRAWN	DATE	
				ISA	03/03/16	

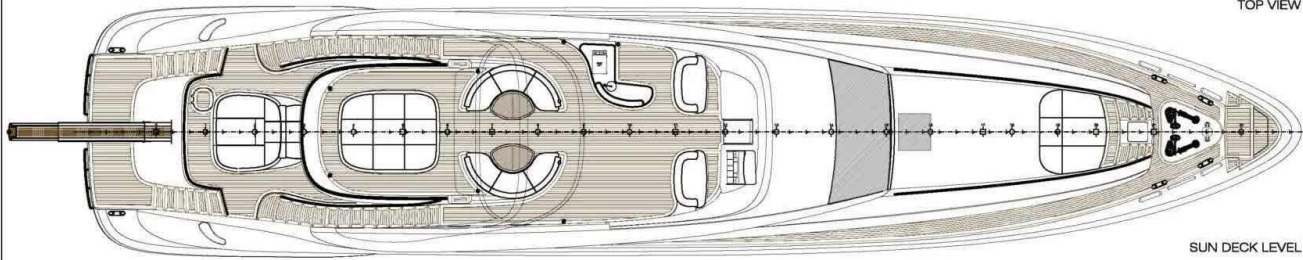
THE CONTENTS OF THIS DRAWING REMAIN THE PROPERTY OF ISA



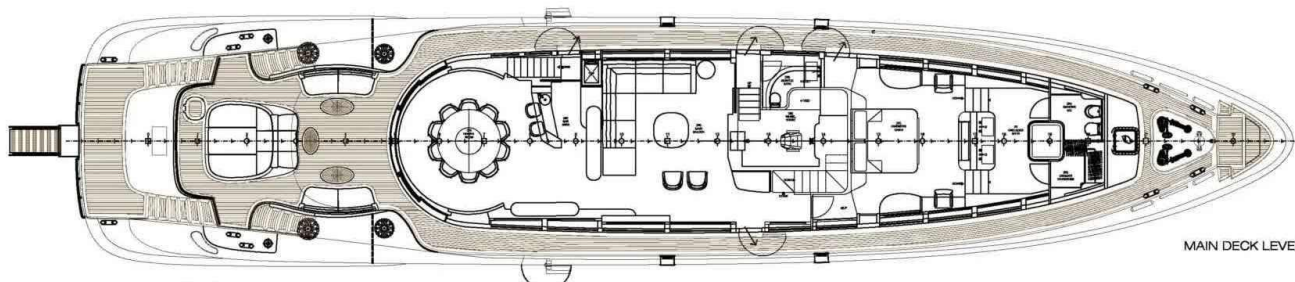
PROFILE



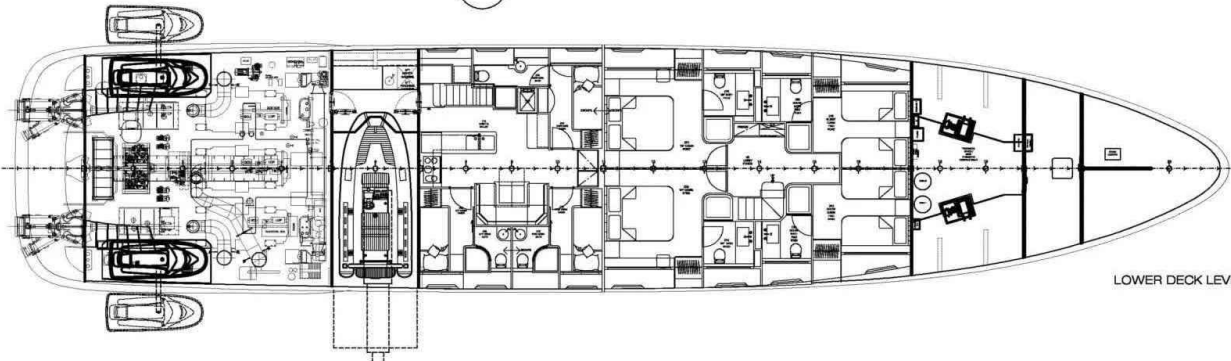
TOP VIEW



SUN DECK LEVEL



MAIN DECK LEVEL



LOWER DECK LEVEL