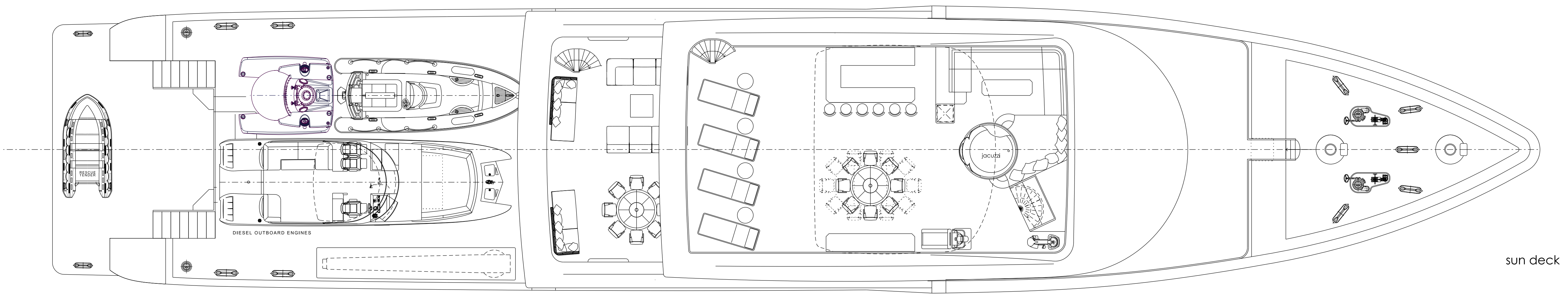
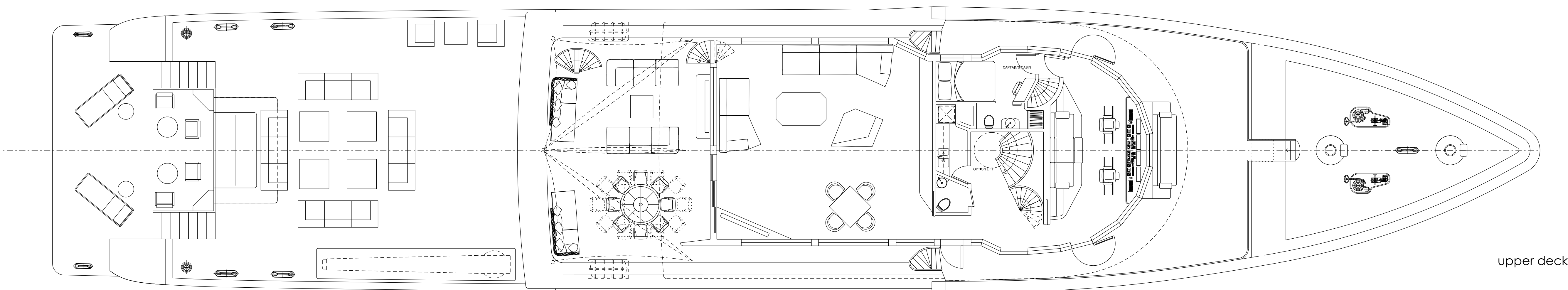


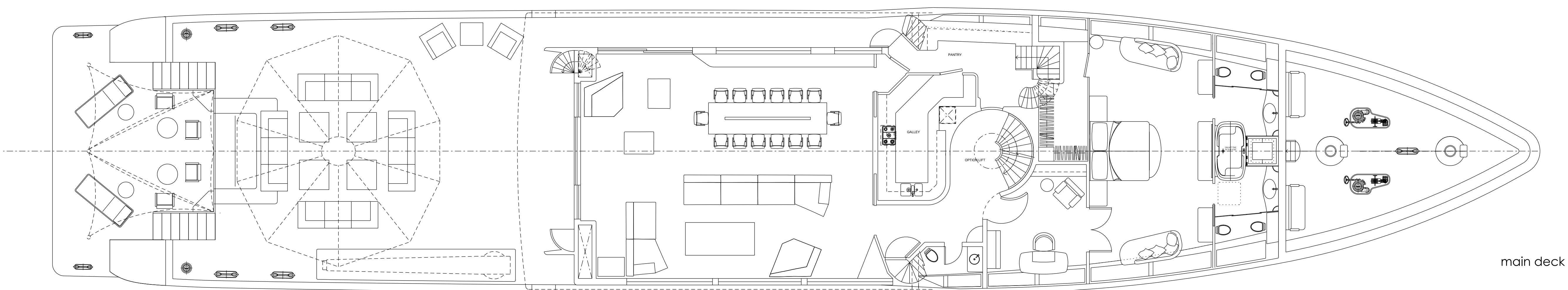
profile



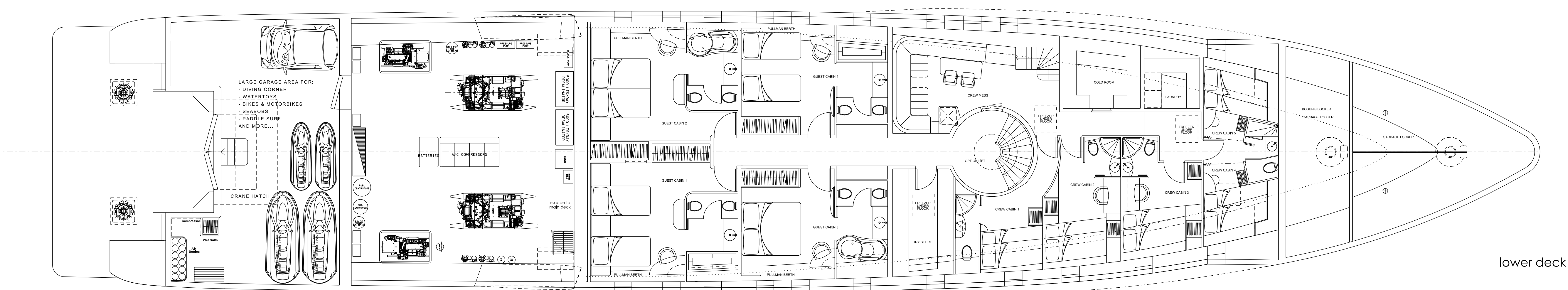
sun deck



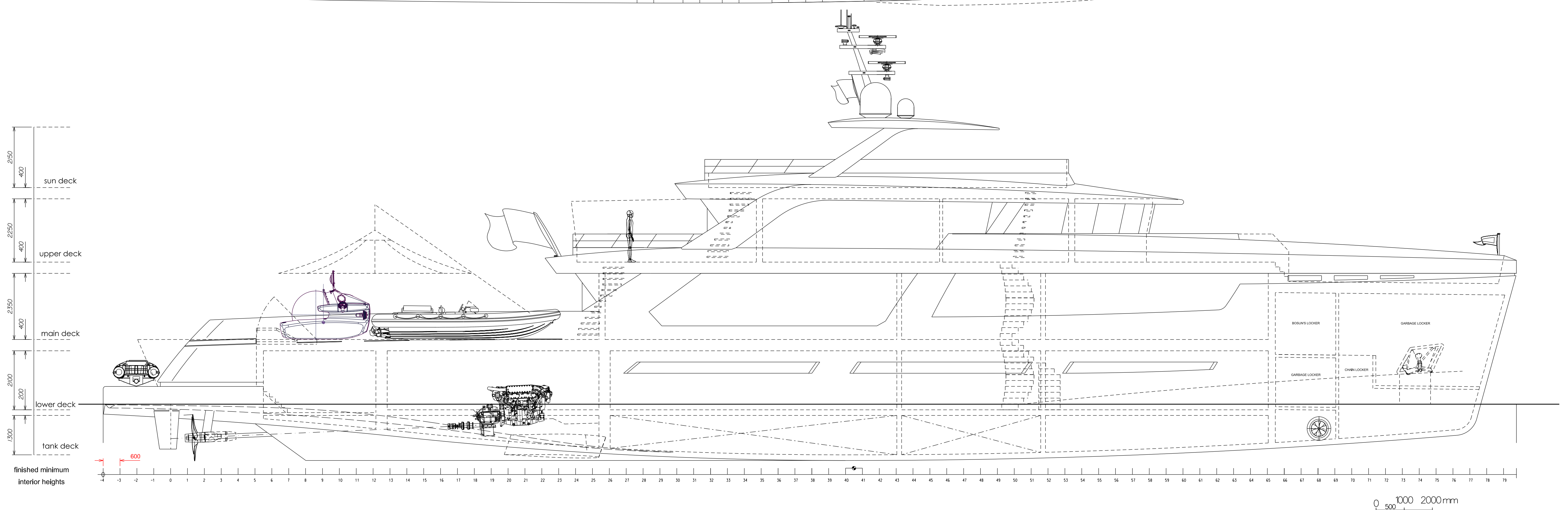
upper deck



main deck




lower deck



finished minimum interior heights

Overall length:	49.90 m	Cruising speed:	15 kn	Fuel tanks capacity:	80 m ³	Waste oil tank capacity:	3 m ³
Length waterline:	48.70 m	Maximum speed:	16 kn	Fresh Water tanks capacity:	12 m ³	Bilge water tank capacity:	3 m ³
Maximum beam:	9.85 m	Range (at cruising speed):	+3000 nm	Lub-oil tank capacity:	5 m ³	Grey & Black Water tank capacity:	8 m ³
Draft:	2.00 m	Range (at 12 kn):	+6000 nm	Hydraulic oil tank capacity:	2 m ³	Stabilizers:	Zero Speed
Displacement :	372 ton	Engines: 2x CAT C32 1000 bhp/746 bkW @ 1800 rpm		LLOYD'S #100 A1 SSC YACHT MONO G6, @LMC,		Bow thruster	90kW
Gross tonnage :	499 GT	Generators: 2x CAT C4.4 86 kVA @ 1500 rpm		UMS, MCA compl.,LY3, Unrestricted, Green Label		HR Steel hull/Aluminium superstructure	
		1x CAT C2.2 28 kVA @ 1500 rpm		10-12 Guests in 5 cabins / 12 Crew in 6 cabins		Tender's Deck (Main Deck aft): LOA up to 10m	


Project: ICE Series - 50 m Explorer Yacht **Drawing No.:** ICE50-001-01-F0
Title: General Arrangement option 1 **Date:** 06/10/21
For: **Project No.:** 547
dgn: 50mExplorerYacht-GA08 **Revision No.:** 01 **Author:** MP **Scale:** 1:75
© Marcelo Penna Yacht Design Av. Icària 143 - 1^a 08005 Barcelona

Tels: +34 93 221 9434
 Fax: +34 93 221 9431
 E-mail: info@mpyachts.com
 website: www.mpyachts.com
 REPRODUCING OR TRANSMITTING IN ANY FORM OR BY ANY MEANS, WITHOUT PERMISSION IN WRITING FROM MARCELO PENNA YACHT DESIGN IS STRICTLY PROHIBITED. ALL RIGHTS RESERVED.