

M/Y RIVIERA LIVING

PRINCESS 35M





RIVIERA LIVING PRINCESS 35

The 35.15m/115'4" motor yacht 'Riviera Living' (ex. Lady Soraya) was built in 2017 by Princess in the United Kingdom at their Plymouth shipyard. Her interior is styled by British designer design house Princess and her luxury exterior design is the work of Bernard Olesinski.

Riviera Living has been designed to comfortably accommodate up to 10 guests in 5 suites comprising one Master cabin on the main deck, three VIP cabins and a Twin convertible on the lower deck. She is also capable of carrying up to 6 crew onboard to ensure a relaxed luxury yacht experience.

KEY FEATURES

10 guests in 5 ensuite cabins

Great outdoor deck space

Jacuzzi on the sundeck

Balcony on the main deck

Top speed of 24 knots



RIVIERA LIVING PRINCESS 35







RIVIERA LIVING PRINCESS 35



EXTERIORS
RIVIERA LIVING



SUNDECK



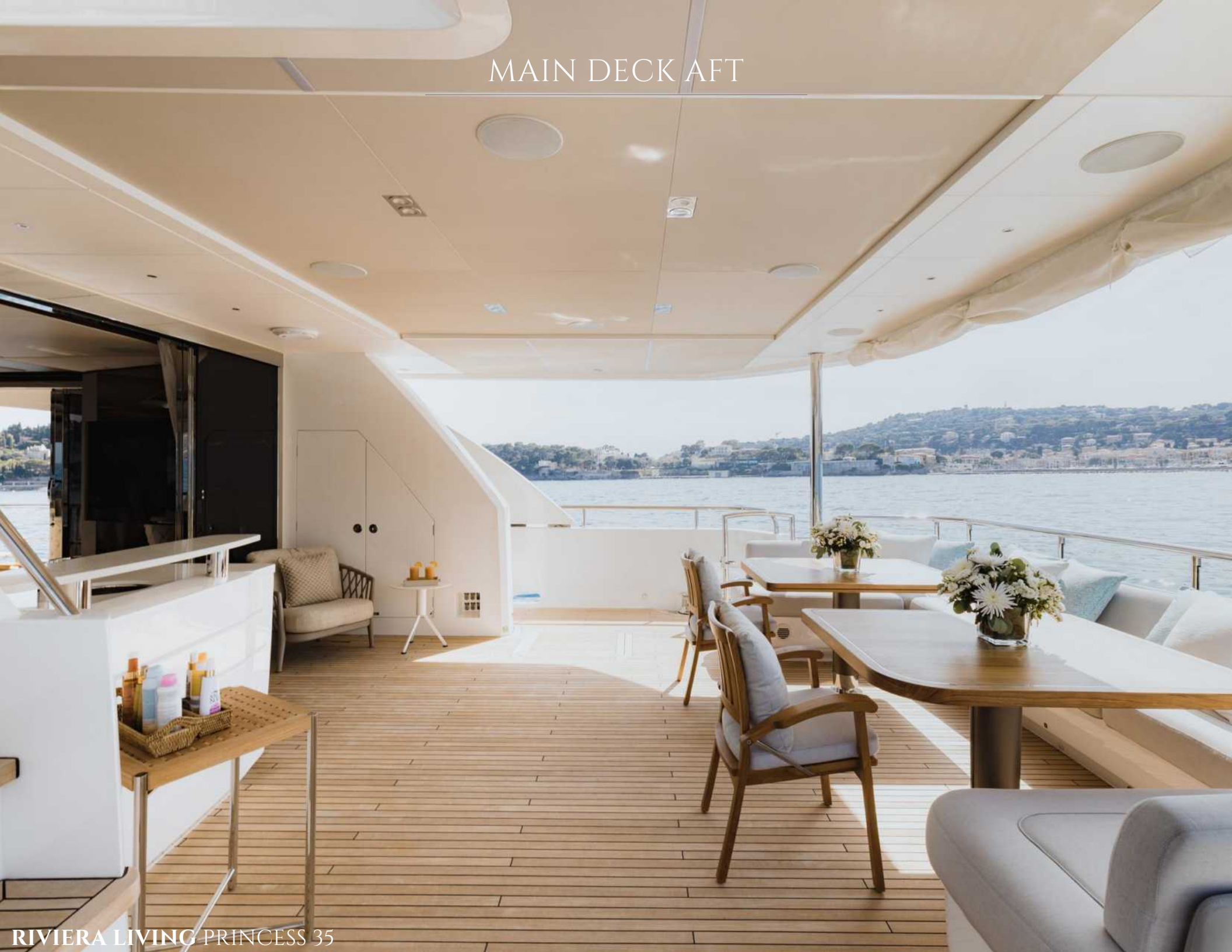
RIVIERA LIVING PRINCESS 35





RIVIERA LIVING PRINCESS 35

MAIN DECK AFT





RIVIERA LIVING PRINCESS 35

A bright, modern living room on a yacht. The room features white leather sofas and armchairs arranged around a dark wood coffee table with a glass top. A vase of white flowers sits on the coffee table. Large windows provide a view of the sea and a coastal town. The ceiling has recessed lighting.

**INTERIORS
RIVIERA LIVING**

SALOON



BALCONY

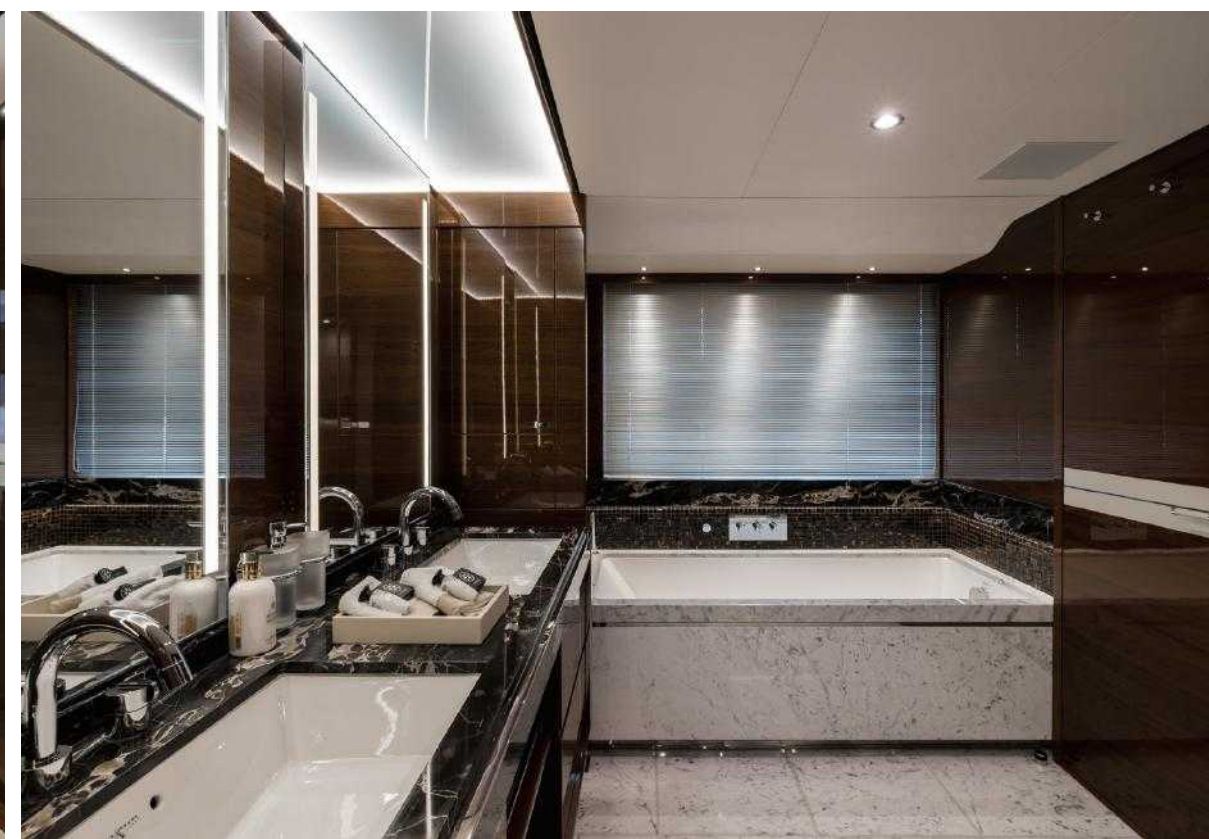


RIVIERA LIVING PRINCESS 35

GUEST ACCOMMODATION

RIVIERA LIVING offers guest accommodation for up to 10 guests in 5 suites comprising a Master cabin located on the main deck, three VIP cabins and one Twin convertible on the lower deck. There are 6 beds in total, including 1 king, 3 queen and 2 single convertible.

MASTER CABIN



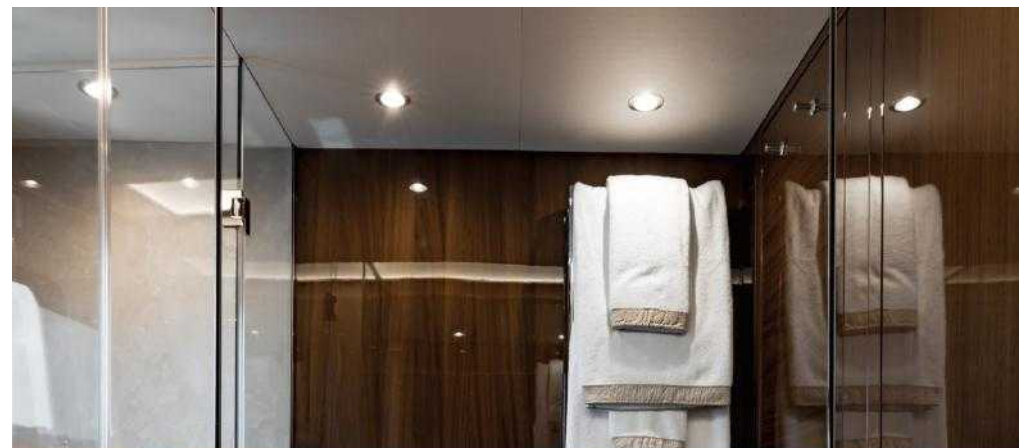


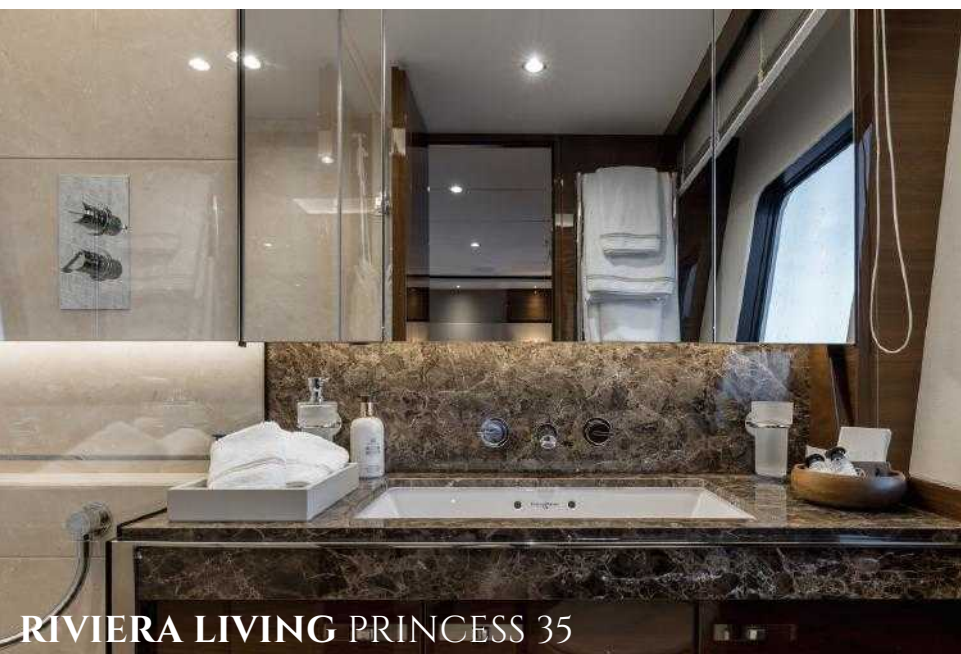
VIP CABIN



RIVIERA LIVING PRINCESS 35

VIP CABIN





TWIN CABIN



OVERVIEW

TYPE	MOTOR YACHT
BUILDER	PRINCESS
MODEL	PRINCESS 35M
YEAR	2017
FLAG	RIF
EXTERIOR STYLING & CONCEPT	BERNARD OLESINSKI
INTERIOR DESIGNER	PRINCESS YACHTS

DIMENSIONS

LENGTH	35.2M (115'6")
BEAM	7.3M (23'11")
DRAFT	2.11M (6'11")

ACCOMMODATION

GUESTS SLEEPING	10
GUESTS CRUISING	10
CABINS TOTAL	5
CABINS CONFIGURATION	1 MASTER, 3 VIP AND 1 TWIN CONVERTIBLE
CREW	6

CONSTRUCTION

HULL MATERIAL	GRP
---------------	-----

ENGINES

2 x MTU SERIES 2000 M94

PERFORMANCE & CAPABILITIES

CRUISING SPEED	16 KNOTS
FUEL CONSUMPTION AT CRUISING SPEED	540L/HR
TOP SPEED	24 KNOTS

TANK CAPACITY

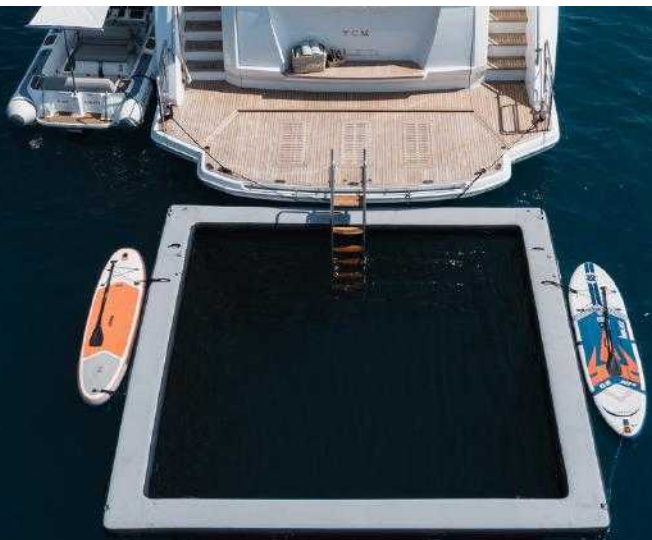
FUEL CAPACITY	18,000 L
WATER CAPACITY	3,250 L

TENDER & TOYS

TENDER 5,45M
2 X PADDLE BOARDS
2 X SEABOBS
1 X WATERSKI
1 X WAKE SURF
1 X EFOIL
1 X TOWABLE
SNORKELING EQUIPMENT



RIVIERA LIVING PRINCESS 35



RIVIERA LIVING PRINCESS 35



M/Y RIVIERA LIVING

PRINCESS 35M