

# *FIREFLY*

MULDER 94 VOYAGER

---

## FIREFLY

---

Welcome to M.Y Firefly, 28.65m of Dutch built quality. A modern masterpiece of innovative design, spacious and opulent interior, impressive volumes and endless comfort. Firefly sleeps eight guests in four luxurious cabins.

Firefly will take you to new horizons every day, she will give you access to places that few ever know and all in the highest comfort and luxury. Share extraordinary times with your friends and family on an ultimate journey of discovery with Firefly.



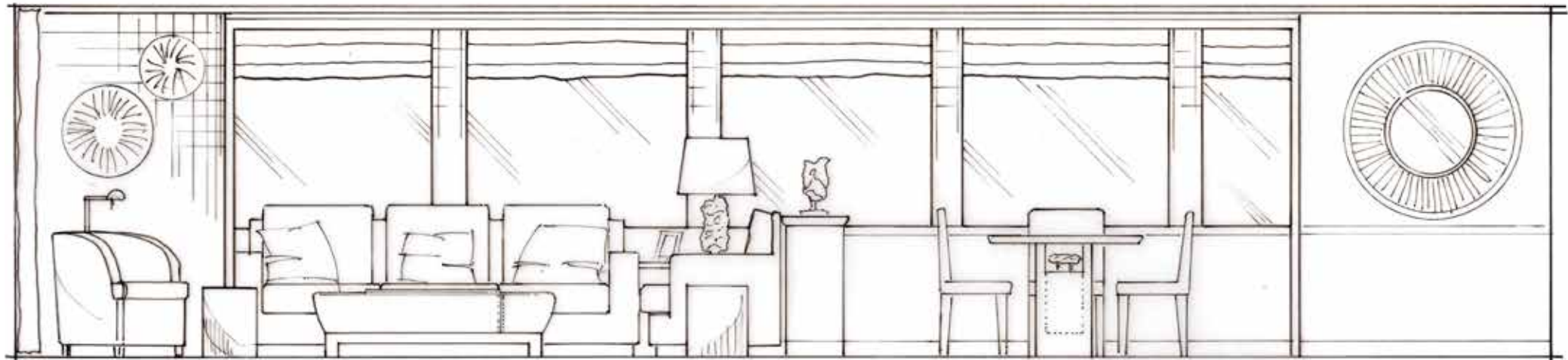












## THE BEAUTY THAT LIES WITHIN, STYLED TO PERFECTION

Designed in a superb beach-house style, Firefly creates an atmosphere that enlivens the senses. Spacious, elegant and comfortable, the interior is timeless and benefits from exquisite craftsmanship, fine art and cutting-edge design. John Vickers from Vickers Design Studio did seek out a rare blue coral which served as the source of inspiration for the creation of the colour and texture scheme throughout the yacht. Unique art commissioned from artist Rado Kirov and backlit blue resins are features of a yacht that has been styled to perfection.





## FLYBRIDGE

Firefly's Flybridge, laid with a vast area of natural teak, offers the ultimate in entertainment space for guests. The large U-shape seating area with dining tables, BBQ grill and bar facilities allows a perfect optional area for the days at anchor and entertaining large groups of friends. A raised deck head structure is fitted with large UV protected sun-lights to create a wonderfully open and light area, perfect for relaxing days at sea.

The aft section is fitted with a davit crane to launch and retrieve the yacht's tender, and can easily be transformed in an open sun bathing area with panoramic views across the anchorage.

















---

## MAIN DECK

---

Traditional wooden capping rails line the entire main deck bulwarks, with wide side decks and high grade mooring stations on the aft deck that adds to the ultimate functionality that Firefly offers. The elegant aft seating area on the main deck presents an ideal location for optional dining in luxurious comfort when in port, or an intimate space to entertain in the afternoon sun before departing ashore.













---

## MAIN DECK - AFT

---

The elegant aft seating area on the main deck presents an ideal location for optional dining in luxurious comfort when in port, or an intimate space to entertain in the afternoon sun before departing ashore.















---

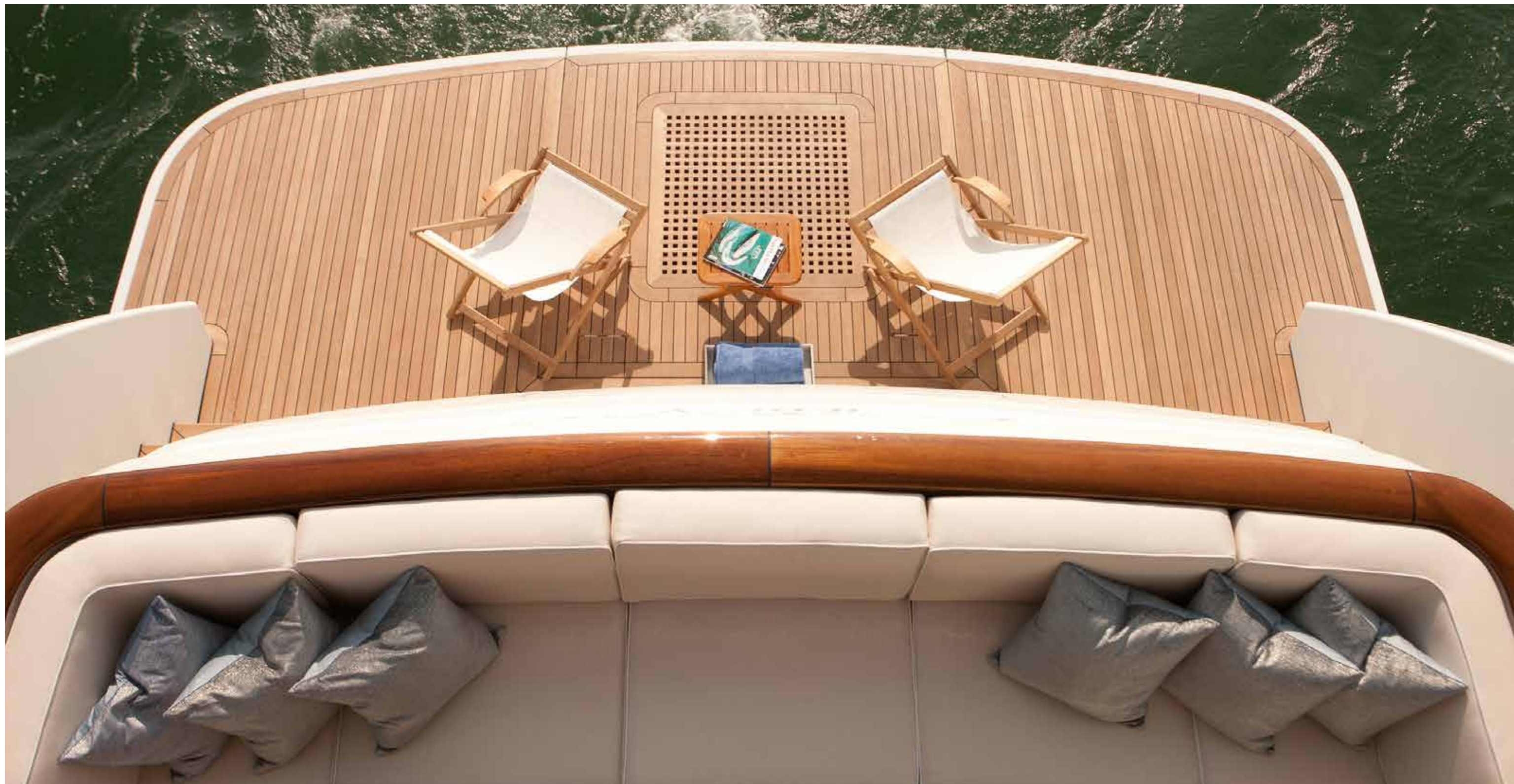
## SWIM PLATFORM

---

From the aft deck, one can easily reach the large swim platform, which has been specifically designed for days of endless fun in the water onboard Firefly. The platform features a separate hydraulic lift system that allows temporary storage of jet skis or a tender when moving between anchorages, and doubles as a pantograph boarding step to be used when moored stern-to in port.









---

## MAIN SALOON

---

The soothing beach house ambiance created throughout Firefly emphasizes the love for the ocean and stimulates all senses. In the spacious and light-filled main salon, the accents of bright blue and white textured fabrics creates a laid-back, elegant setting where guests enjoy endless comfort whilst under voyage.













---

## DINING

---

As night falls, the subtle lighting throughout the interior cleverly highlights its uniqueness. The main saloon's swirling wall paneling and coffee table design, as well as the illuminated corals embedded within the 8-person dining table create a luxurious and serene atmosphere for evenings spent either relaxed or entertained.





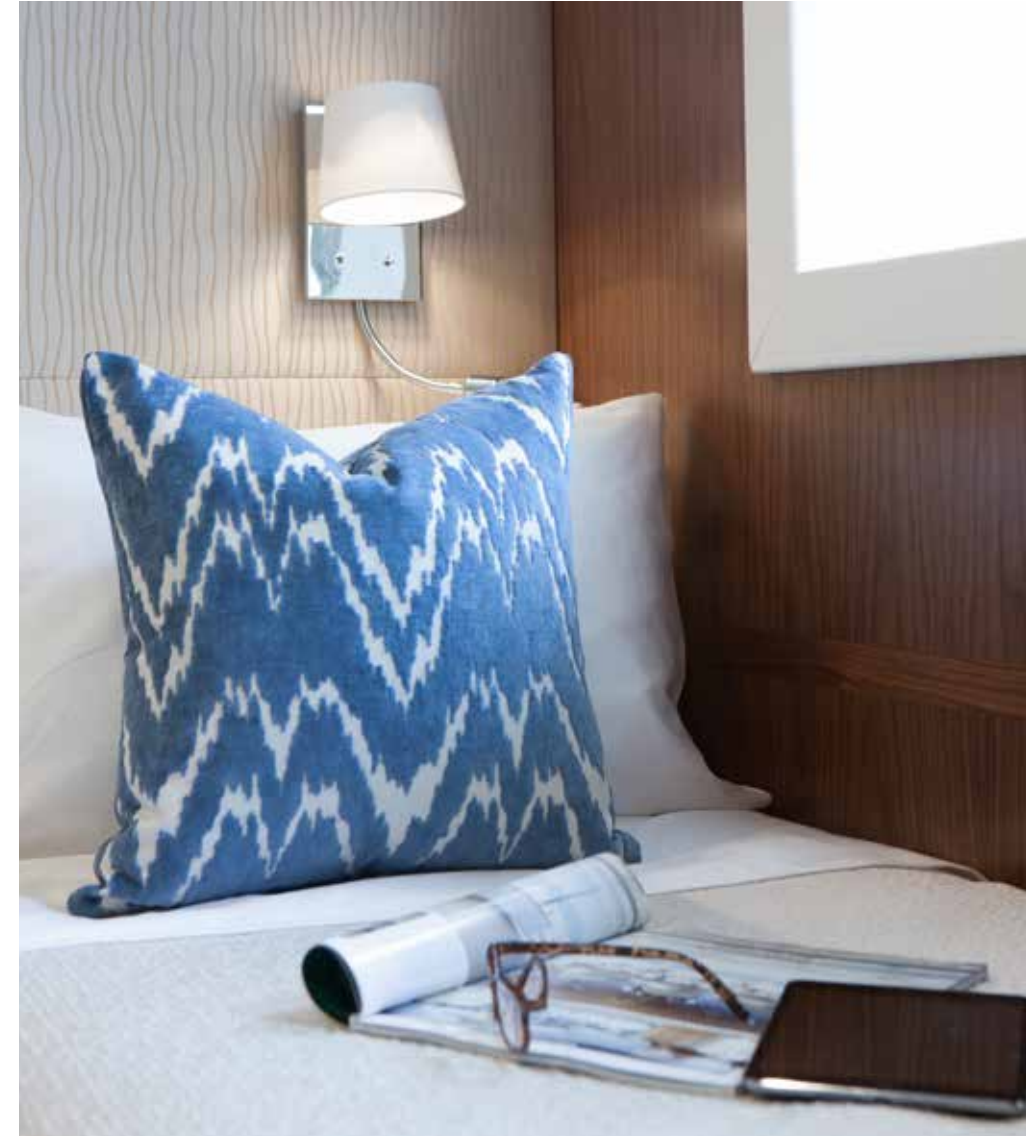


---

## GUEST CABINS

---

Firefly's opulent guest cabins sleep up to eight guests in four spacious cabins, including the magnificent full-beam Master suite, a VIP suite and two twin cabins that can convert into doubles. Each of the cabins have their own ensuite bathrooms and plentiful storage space.





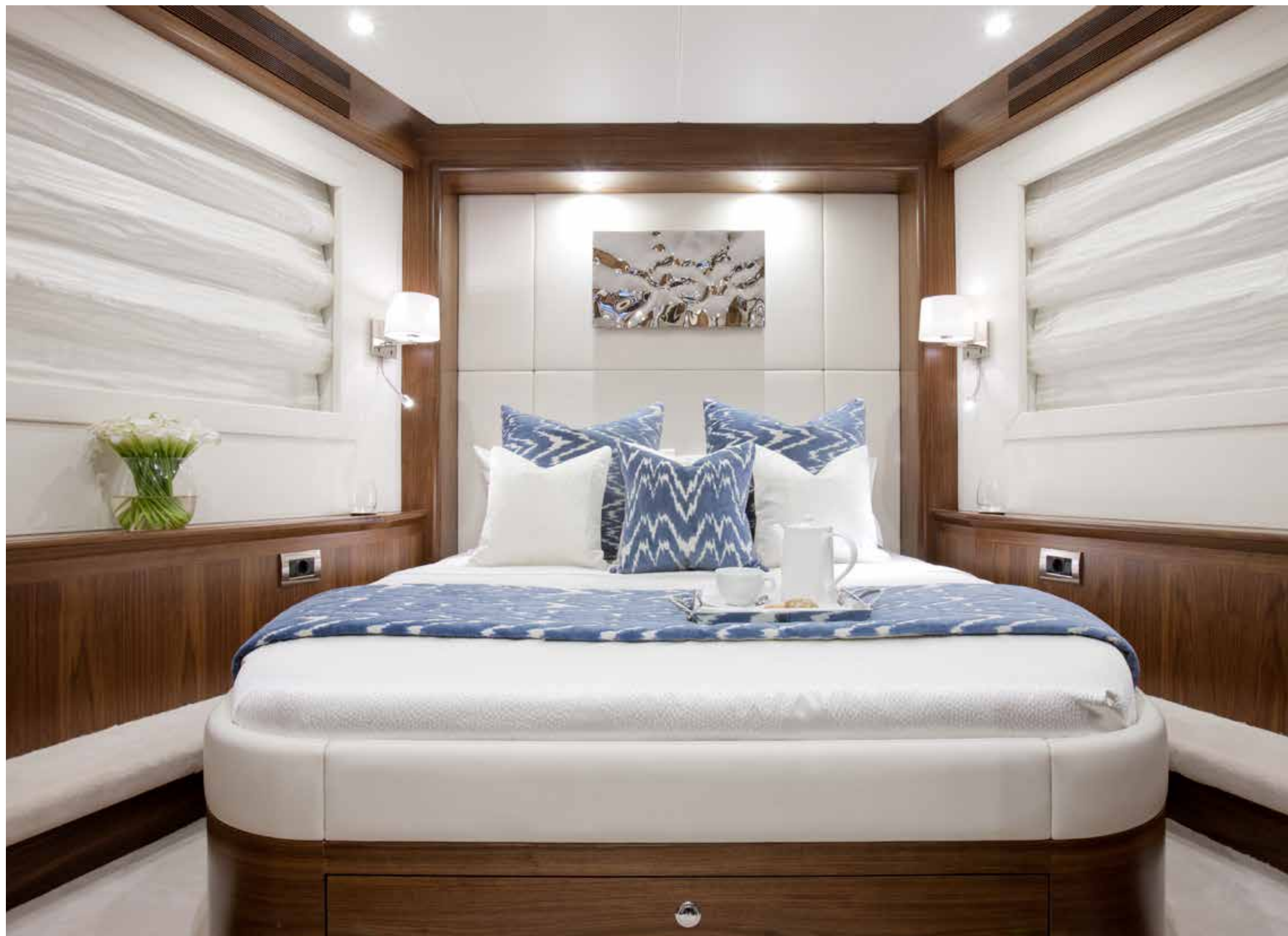


TWIN CABINS









VIP CABIN



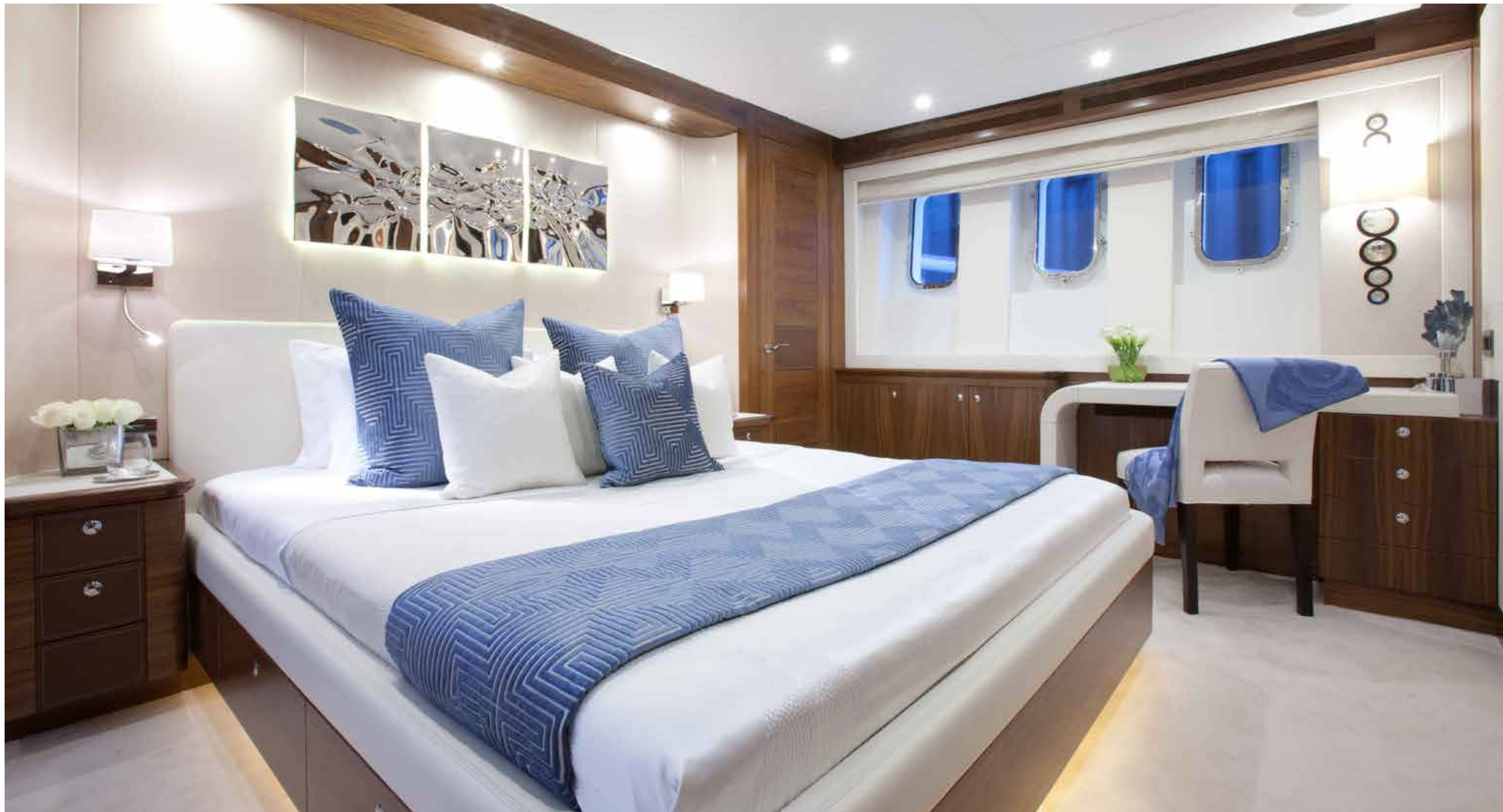




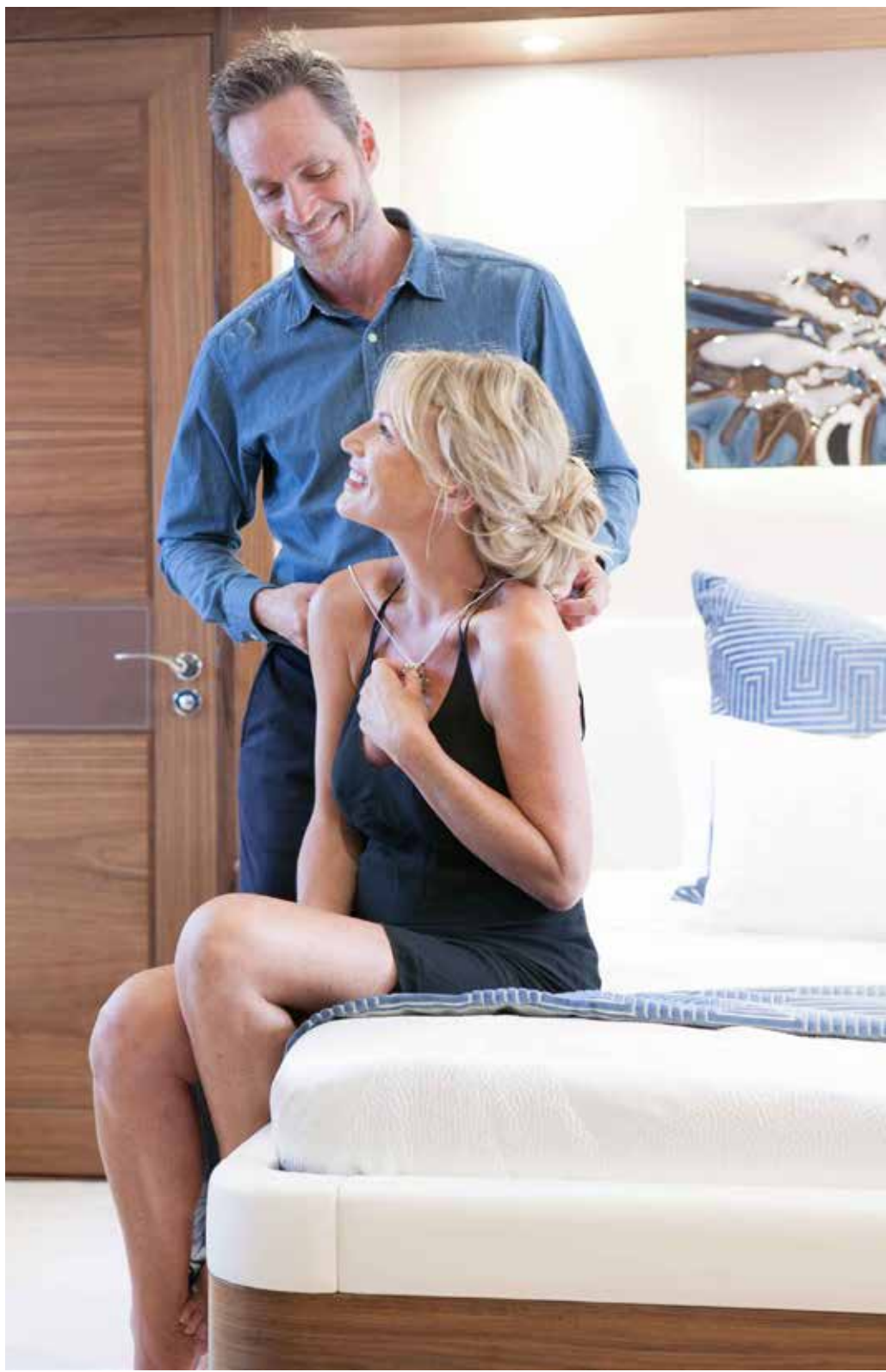


## MASTER CABIN

The full beam master cabin is exquisitely decorated in the same light blue and white tones as found throughout the yacht. World-renowned artist Rado Kirov was commissioned to sculpt a custom piece that now adds a soft contrast to the nautical theme above the bed. The Master is light and spacious, it has comfortable seating area, a beautiful desk space with a view, his and hers walk in wardrobe and a vast restroom with twin amenities throughout.















---

## A POWERFUL SILENCE

---

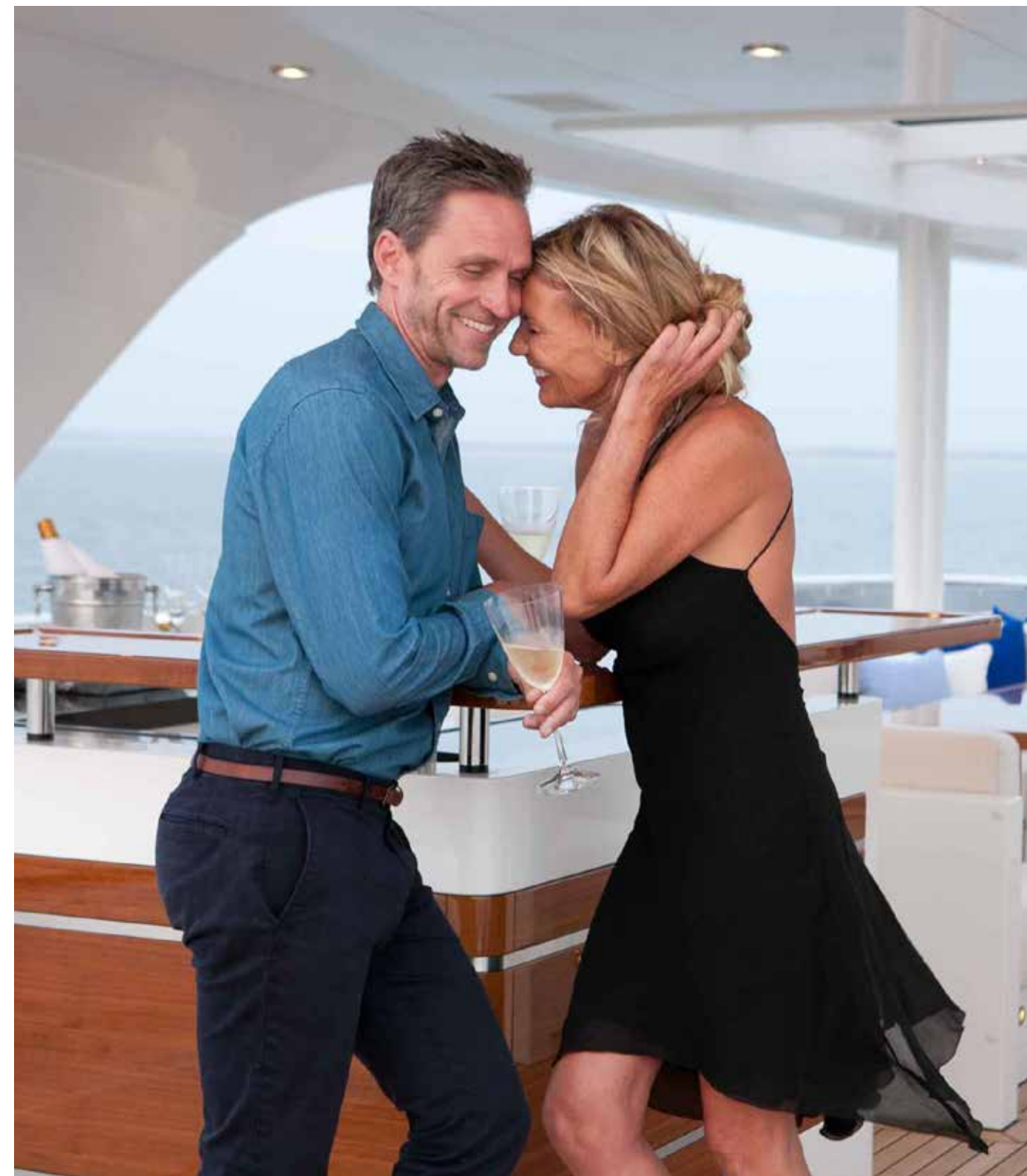
Firefly is fitted with two low rpm derived Caterpillar C18 engines each delivering 1150hp, which gives the yacht exceptional fuel efficiency and ultra low noise level figures. Comfortably reaching 3600nm while traveling at 9 knots, Firefly will reach a top speed of 17 knots and has a noise level of a mere 53 decibels while underway. Coupled with a three-ton freshwater tank and water maker with a capacity of 166 litres per hour, Firefly easily allows the self-sufficiency required for long voyages.





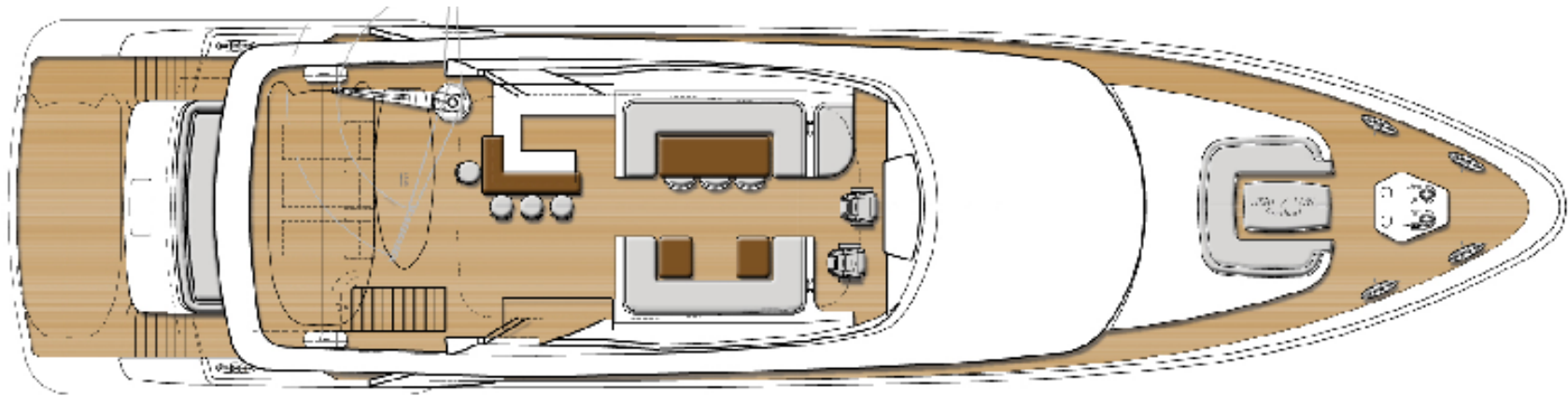




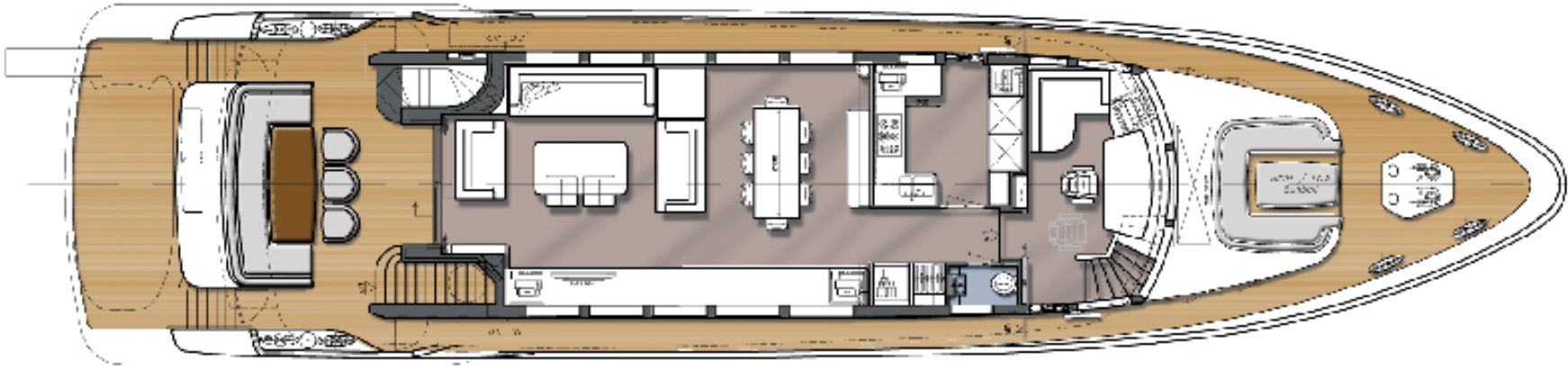




Fly bridge



Main deck



Lower deck



M.Y. FIREFLY - CHARTER SPECIFICATIONS

LENGTH	28.65 M
BEAM	6.85 M
DRAFT	1.90 M
DISPLACEMENT	100 T
FLAG	MALTA
ENGINES	TWIN CATERPILLAR C18 1.150 HP
RANGE	3.600 NM at 9 KNOTS
GROSS TONNAGE	161 GT
CONSTRUCTION	ROUND BILGED
MATERIAL	ALUMINIUM HULL AND SUPERSTRUCTURE
CRUISING SPEED	15 KNOTS
MAXIMUM SPEED	17 KNOTS
EXTERIOR DESIGN	OMEGA ARCHITECTS
INTERIOR DESIGN	OMEGA ARCHITECTS / VICKERS STUDIO
STABILIZERS	ZERO-SPEED
TOYS	5.2m RIB, 1 x SEADOO JETSKI, 2 x SEABOBS, TOWABLE TOYS
CRUISING AREA	WESTERN MEDITERRANEAN
ACCOMODATION:	
NO. OF GUESTS	EIGHT PERSONS
IN PORT USE	FIFTY PERSONS
NO. OF CABINS	FOUR (1 X MASTER, 1 x VIP, 2 X TWIN/DOUBLE)
CREW	CAPTAIN PLUS THREE







# *FIREFLY*

For charter enquires, please contact your preferred charter broker