

'joyMe

ZEPTER YACHT-2011-49.91M





THE PERFECT CHARTER YACHT

Enjoy with style on board

Built to enjoy life on the sea, 'joyMe invites you to discover her potential as a charter guest. Combining remarkable interiors and open air exterior areas, she is the perfect yacht to experience the world of luxurious and stylish cruising.

The 50 meter trideck displacement superyacht 'joyMe built by PHILIP ZEPTER in 2011 offers accommodation for up to 12 guests in 6 in-suite air-conditioned cabins and has crew quarters for 11 crew members.

Each compartment of space within the yachts interior was treated as a separate entity with its own story and philosophy, benefiting from its own atmosphere, communicating different emotions and feelings to its guests. She has a comfortable cruising speed of 11 knots.

Onboard there are endless entertainment opportunities for everyone with 3.5 meter Jacuzzi and sky lounge especially attractive in the evening. The Gym, Finnish sauna & Hammam SPA with sea view and lots of water toys which provide the full charter experience.



EXTERIOR SPACES



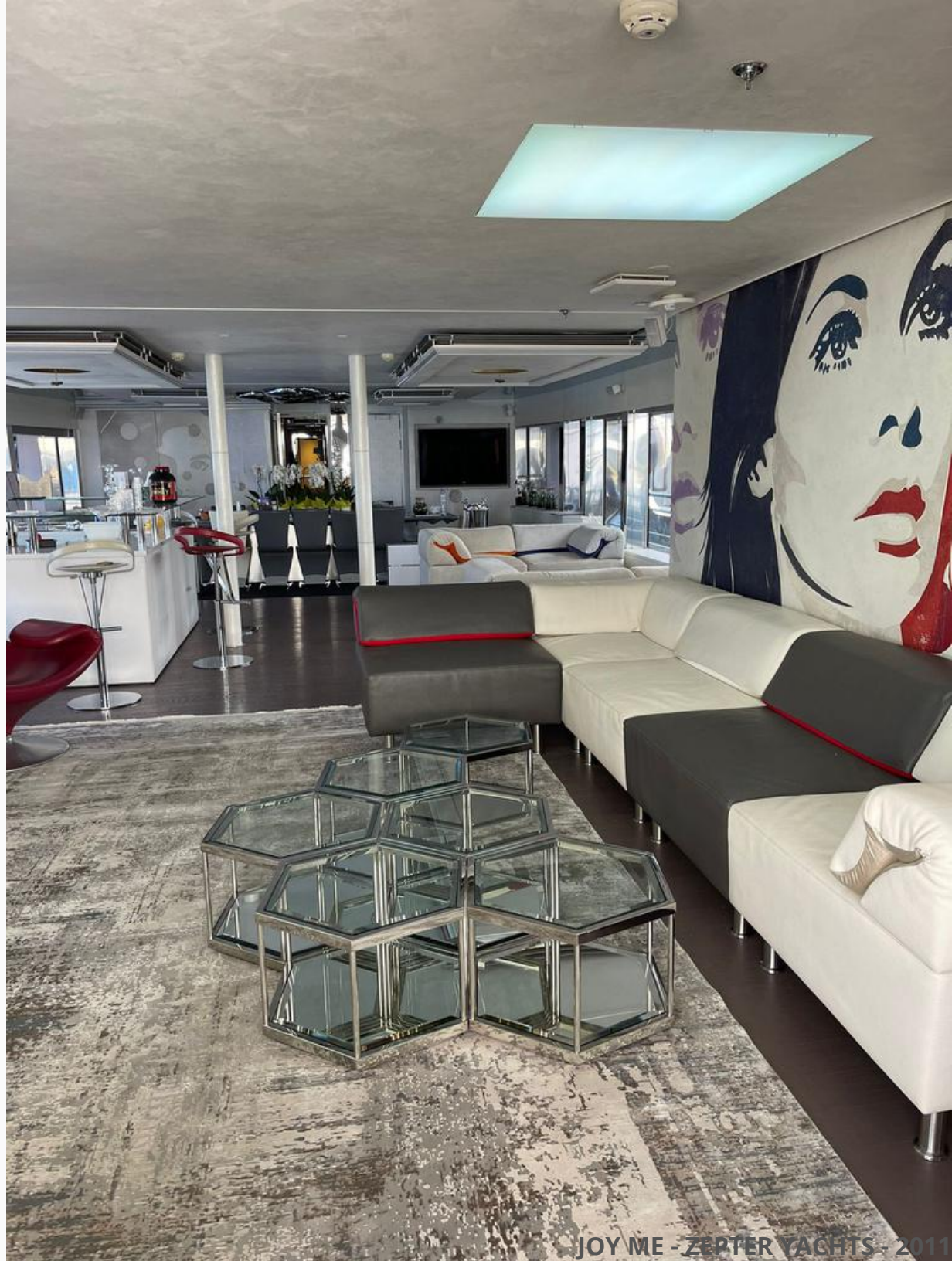
SUN DECK



SUN DECK

INTERIOR SPACES

MAIN SALON



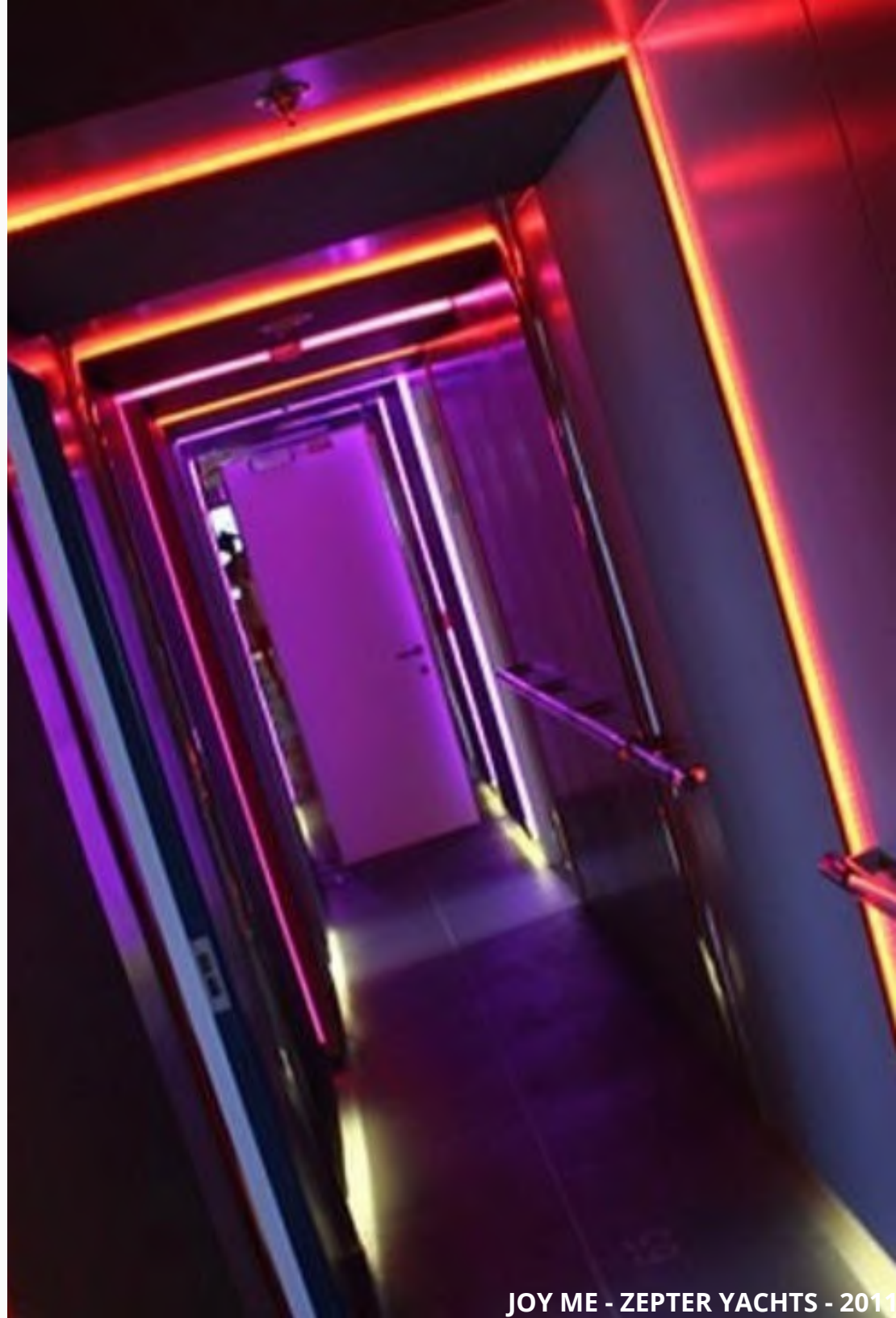


DINING ROOM

GUEST ACCOMMODATION

'JoyMe interior configuration has been designed to comfortably accommodate up to 12 guests overnight in 6 cabins, comprising a master suite, 1 vip cabin, 4 double cabins

She is also capable of carrying up to 11 crew onboard in 6 cabins to ensure a relaxed luxury yacht experience, making your wishes become true.





MASTER BEDROOM





MASTER
LOUNGE



VIP BEDROOM



DOUBLE CABIN "CHIC"





DOUBLE CABIN "NATURE"



TWIN CABIN "MONDRIAN"





TWIN CABIN "PRINT"



OVERVIEW

TYPE	MOTOR YACHT
NAVAL ARCHITECT & BUILDER	ZEPTER YACHT
YACHT DESIGN	SRDJAN DJAKOVIC
INTERIOR & EXTERIOR DESIGN	MARIJANA RADOVIC
YEAR	2011/2021
FLAG	CROATIA

DIMENSIONS

LENGTH	49.91M (163'9"FT)
BEAM	9.12M (29'11"FT)
DRAFT	2.55M (8'4"FT)
GROSS TONNAGE	620 GT

ACCOMMODATION

GUESTS	12
CABINS TOTAL	6
CABINS CONFIGURATION	1 MASTER, 1 VIP , 2 DOUBLE, 2 TWIN (CONVERTIBLE)
CREW	11

CONSTRUCTION

HULL CONFIGURATION	DISPLACEMENT
HULL MATERIAL	STEEL

ENGINES

MODEL	2 X CUMMINS KTA-38-M1, 12 CYLINDER
-------	---------------------------------------

PERFORMANCE & CAPABILITIES

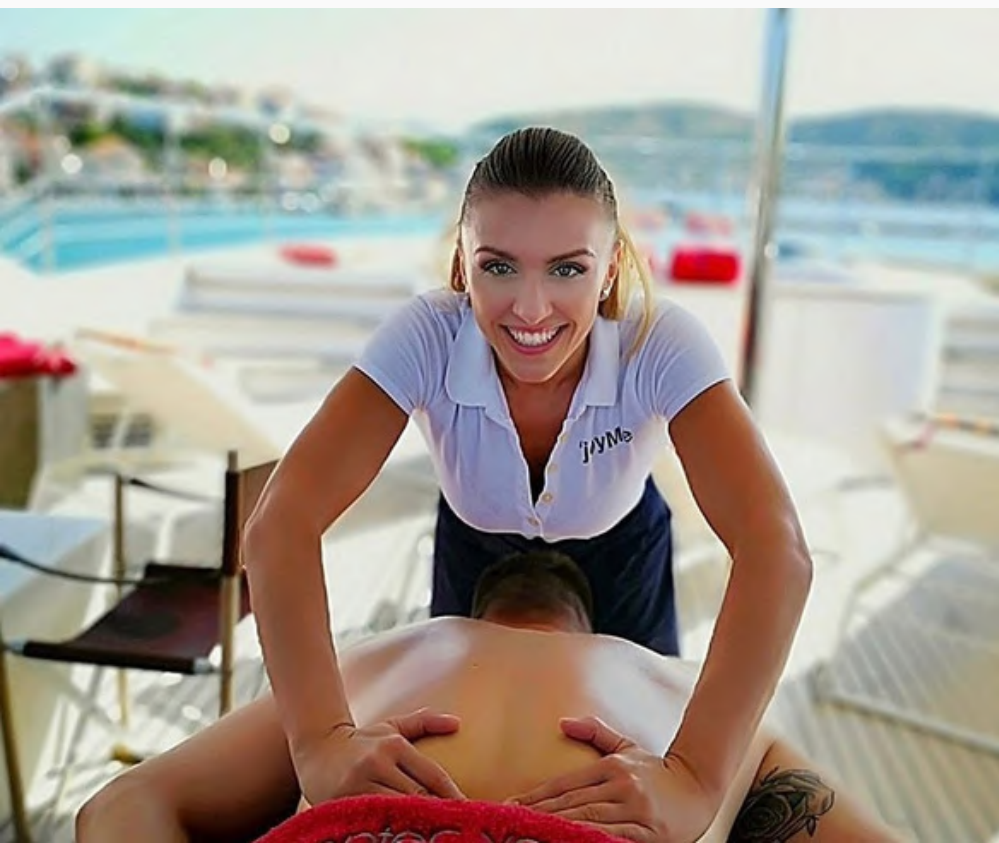
CRUISING SPEED	11 KNOTS
FUEL CONSUMPTION	250 LITRES/HR



FITNESS ROOM

SAUNA







TENDERS + TOYS

6 M ZODIAC TENDER

SEA-DOO WAKE PRO 230

YAMAHA 3-PERSON WAVERUNNER

WATERSKIS

WAKEBOARD INFLATABLE

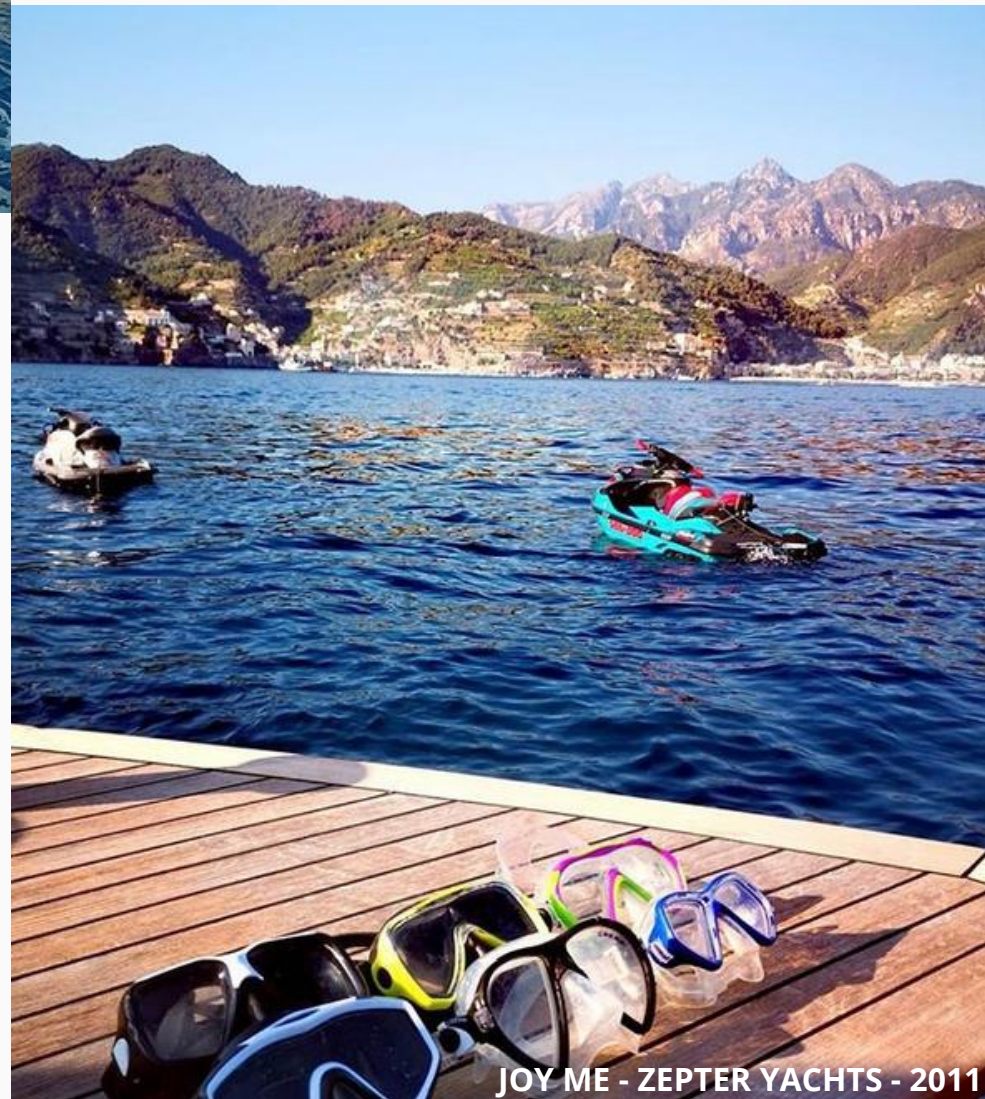
TOWABLE TOYS

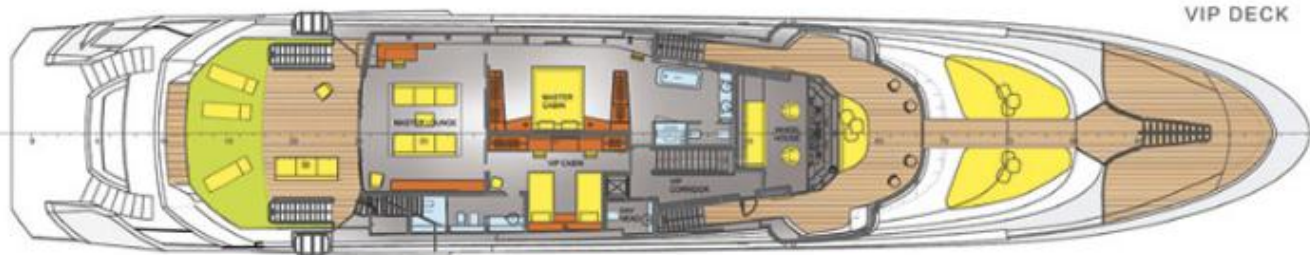
2 X GOCYCLE ELECTRIC BIKES

2 X STANDUP PADDLEBOARDS

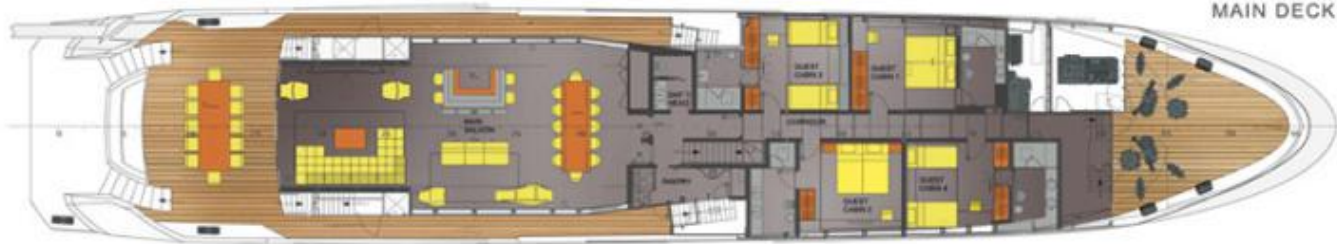
2 X SEABOBS

SNORKELING EQUIPMENT





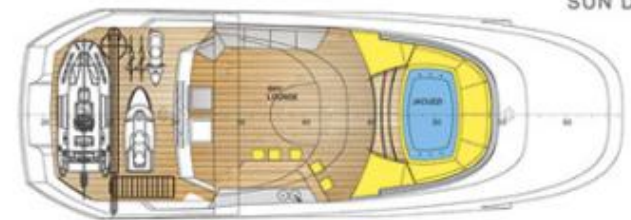
VIP DECK



MAIN DECK



CABIN DECK



SUN DECK





'joyMe

ZEPTER YACHT-2011-49.91M