

LATITUDE

FOR CHARTER





MAIN DECK SALOON



MAIN DECK - FORMAL DINING



FULL BEAM MASTER CABIN - FORWARD ON THE MAIN DECK



MASTER EN SUITE BATH & SHOWER ROOM



2 FULL BEAM VIP SUITES WITH ENSUITE BATH & SHOWER - LOWER DECK

2 TWIN/DOUBLE CONVERTIBLE CABINS WITH SHOWER (1 WITH EXTRA PULLMAN) - LOWER DECK





SKY LOUNGE - CONFIGURED AS A GYM



SKY LOUNGE - CONFIGURED AS A GYM



SKY LOUNGE - CONFIGURED AS A VIP SUITE (6TH CABIN)



EN SUITE SHOWER



MAIN DECK AFT



BRIDGE DECK AFT



SUN DECK - VIEW FORWARD



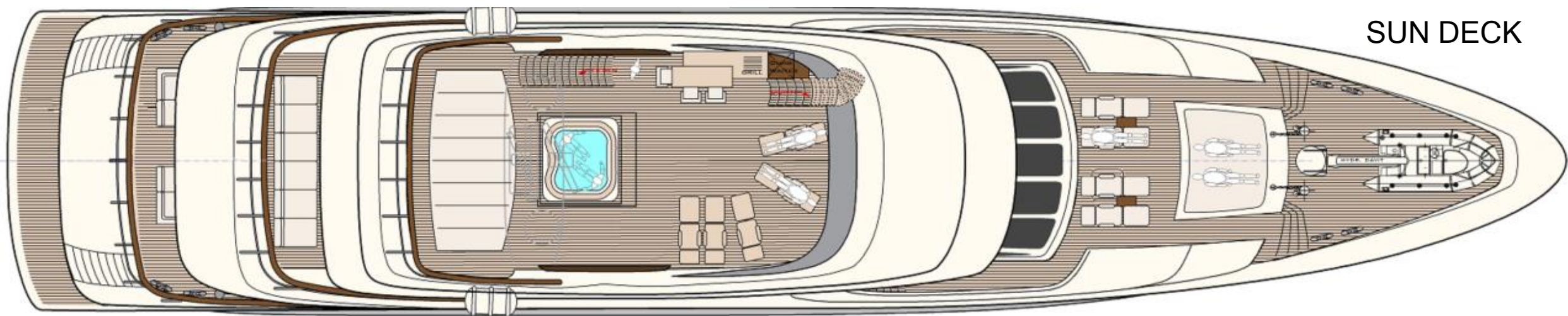
SUNPAD & SEATING - FOREDECK



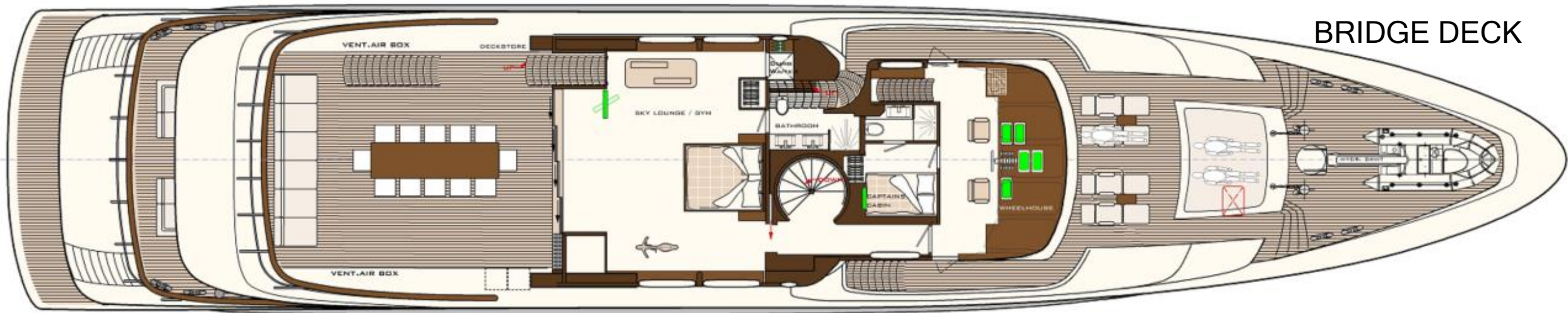
THE BRIDGE



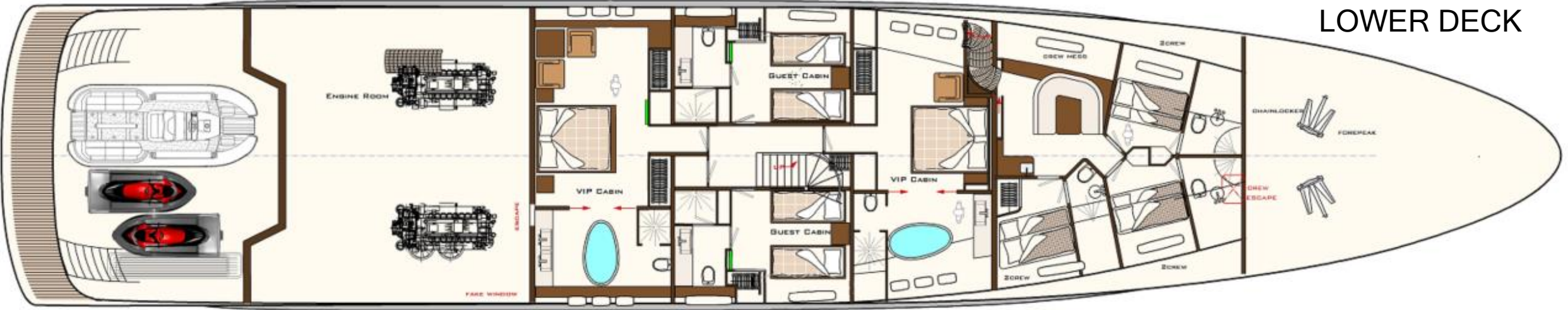
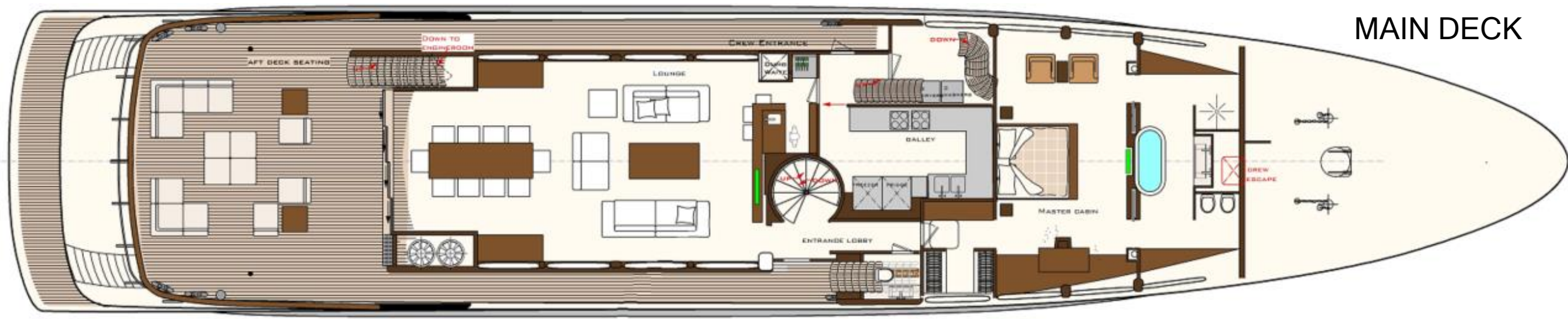
CASTOLDI TENDER & SEADOOS



SUN DECK



BRIDGE DECK



M/Y LATITUDE

Specification

Length	43.50m (142'9")
Beam	8.40m (27'7")
Draft	2.30m (7'7")
Build	Dutch Yacht Builders
Interior Designer	Piet Boon Design
Year	2010
Cruising Speed	13.5 knots (maximum 18 knots)
Fuel Consumption	350 l/hr @ 13.5 knots

Crew 7

Guest Accommodation

10-12 Guests in 5-6 Cabins:

- Master cabin with bathroom en suite (tub & separate shower)
- 2 Full beam queen VIP cabins with bathroom en suite (tub and separate shower)
- 2 Convertible twin/double cabins with shower room en suite
- Sky lounge converts to either a gym or a double cabin with shower room

Tenders & Toys

1 x 5.3m Castoldi jet turbo drive tender
2 x Seadoo RXP 255RS waverunners
2 Piaggio scooters
1 x Windsurfer
Wakeboards (adult & youth)
Water skis (adult & junior)
Mono skis (adult & junior)
2 x Mountain bikes
2 x folding bikes
1 x towable banana
Scuba diving equipment
Snorkelling equipment

Gym Equipment

TechnoGym exercise bike
TechnoGym treadmill
Exercise bench
Weights up to 30 kg
Exercise/Yoga mats
Massage table

LATITUDE

